

Zombie Scarf

katie clark

crochet

Knitting!


Inspired by the movie *Shawn of the Dead*, the combination of Nordic patterning and zombie motifs will delight the most fashionable zombie fan!

Difficulty

Advanced



Materials

- Cascade 220: 2 balls each of coordinating colors.
- US Size 7 Needles 
- Tapestry needle

Finished size

Width: 7.5" Length: 72"

Gauge

Not critical

knitting cast on. You will have 36 of each color.

Note: Do not work into the slip knot stitches. After a couple of rows, slide these loops off the needle and remove the slip knot.

Set Up Row

Double knit front side in color A and back side in color B.

Pattern

Work double knitting in solid colors on each side for 4 rows.

Section 1

Work Nordic Chart 1 across.
Work 2 dk, Biohazard Chart, 2 dk,
Biohazard Chart, 2 dk.
Work Nordic Chart 2 across.
Work Winchester Rifle Chart across.
Work Nordic Chart 3.
Work 2 dk, Zombie Chart, 2 dk,
Zombie Chart, 2 dk.
Work Nordic Chart 4.

Section 2

Work Salt and Pepper Chart for 40 inches.

Or you can work the pattern until you run out of yarn. Count your pattern repeats and work a little less than that many more. For example, if you ran out after 20 repeats, pick up new yarn and continue for 18 or 19 more repeats.



Section 3

Work Section 1 in reverse and upside down.

Work double knitting in solid colors on each side for 3 rows.

Bind Off

Bind off using your favorite double knitting bind off. Or, for an invisible bind off, separate colors on different needles. K the color A side one more time. Using color B, work kitchener stitch across seaming back to front.

Finish off. Weave in ends. 

Before You Begin

This scarf is made using the double knitting technique. If you haven't tried double knitting before, learn the technique from my pattern Double Knit Scarf. Double knitting is an intermediate technique, but the patterning in this design makes this one advanced. You should be very comfortable with double knitting before attempting this design.

Note: I inserted 2 rows of plain double knitting between each chart.

Cast On

Holding 2 colors together as one, make a slip knot and slide onto needle. Do not count this as a stitch.

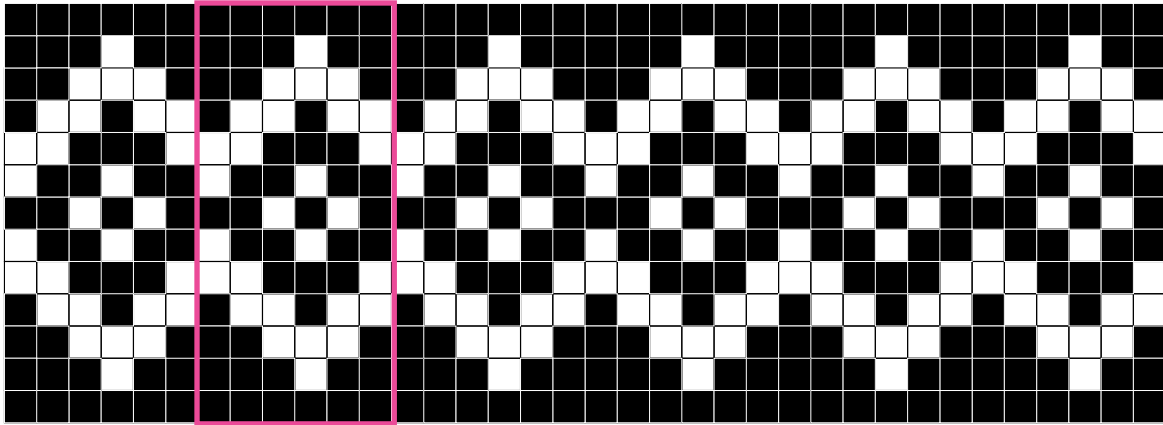
Cast on 72 sts using invisible double knitting cast on or your preferred double



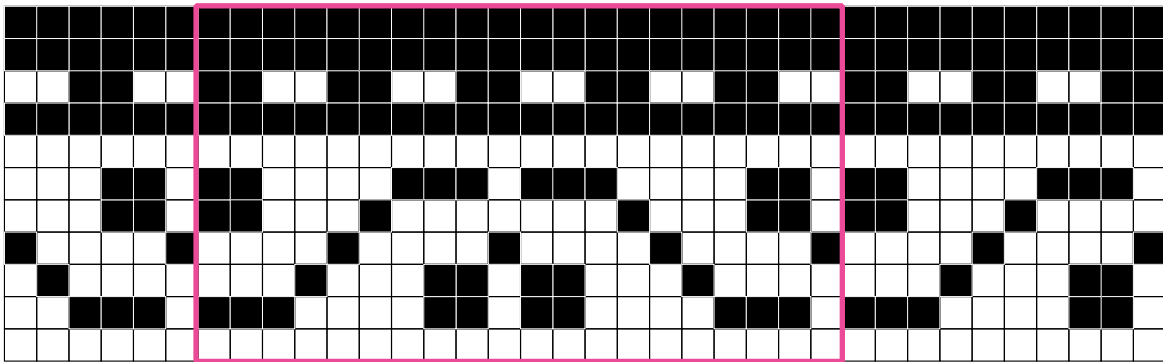
Repeat in Pink Box



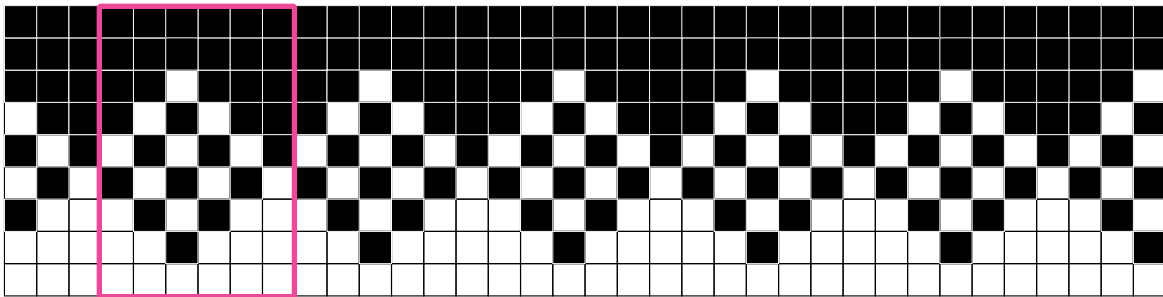
Nordic Chart 1



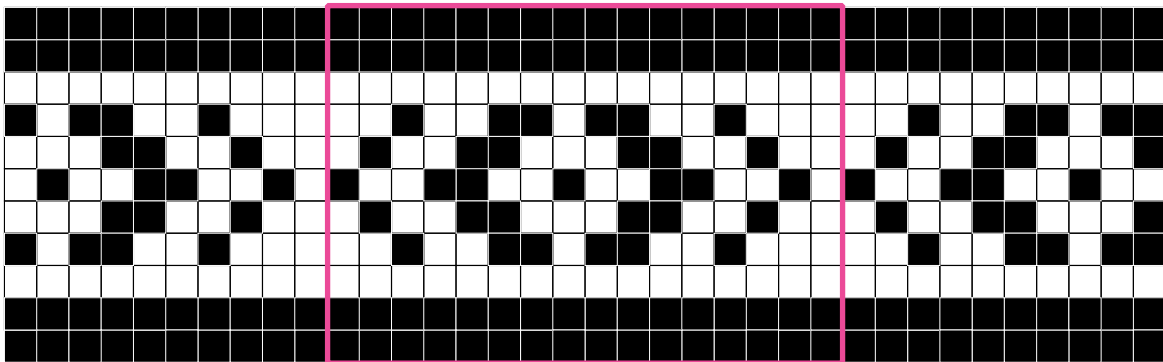
Nordic Chart 2



Nordic Chart 3

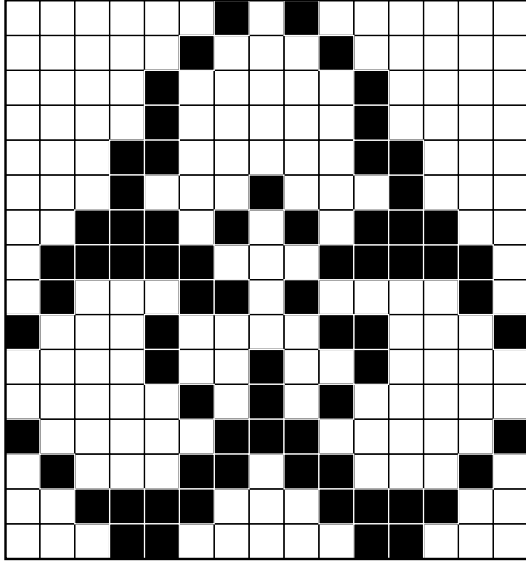


Nordic Chart 4

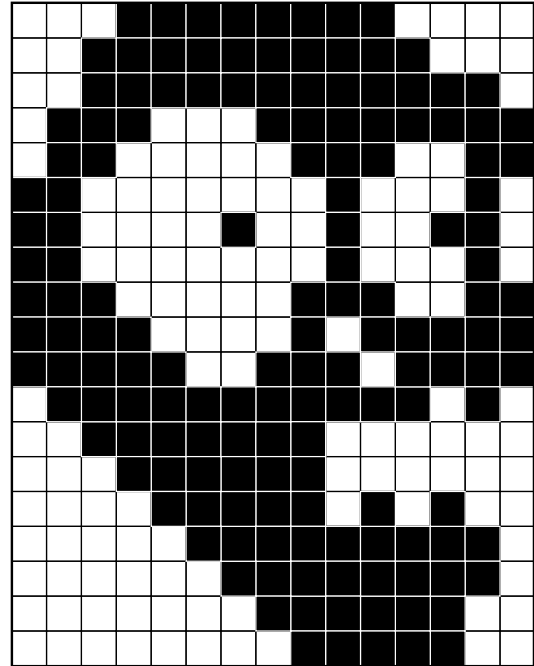




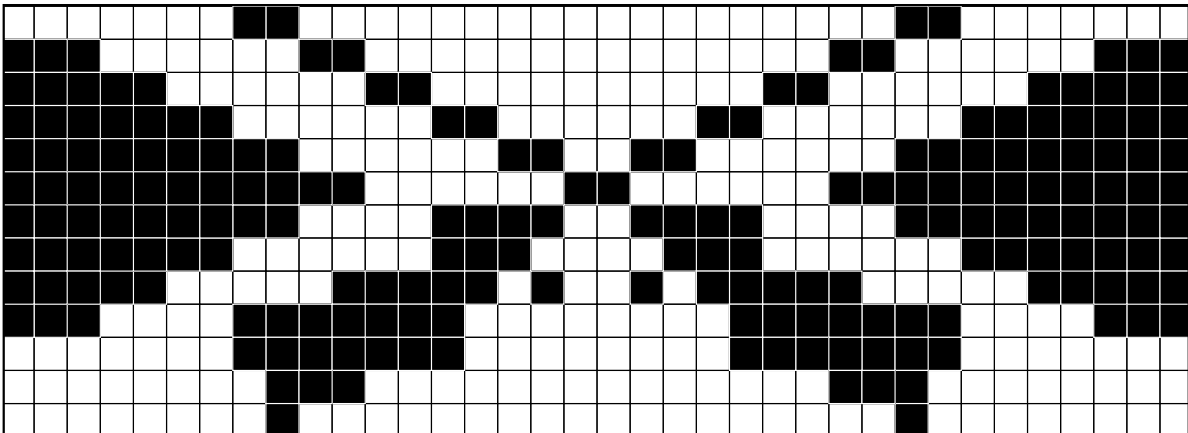
Biohazard Chart



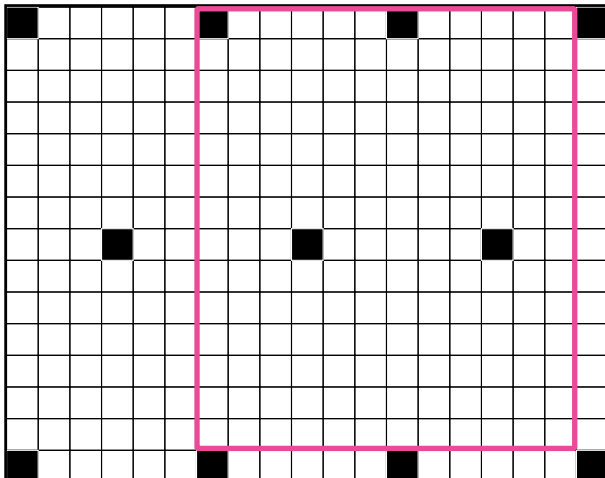
Zombie Chart



Winchester Rifles Chart



Salt & Pepper Chart



Abbreviations

dk = double knit
K = knit
sl = slip
st(s) = stitch(es)

